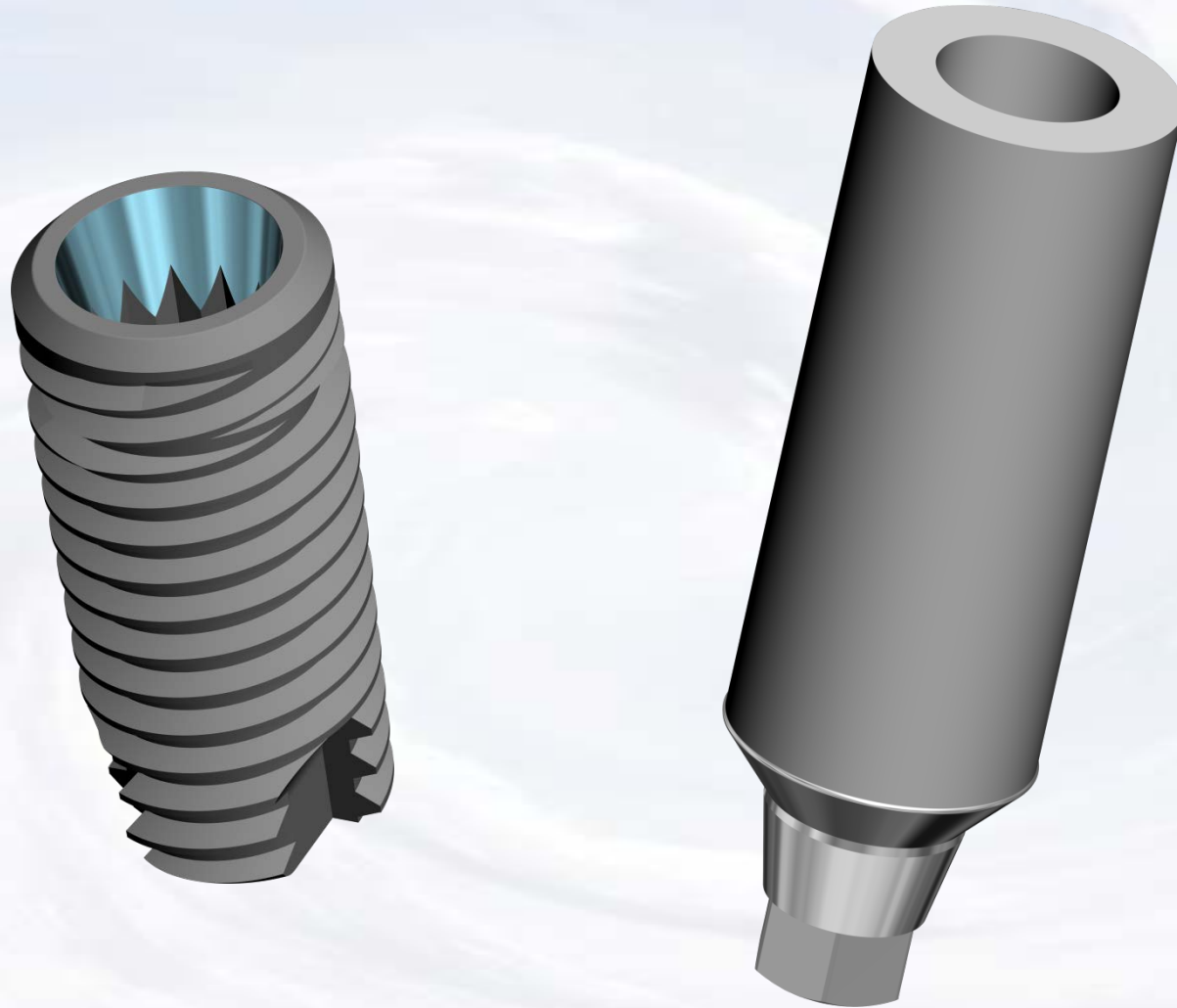


# Conus UCLA Screw Retained Crown



**Blue Sky Bio**

# Conus UCLA Screw Retained Crown

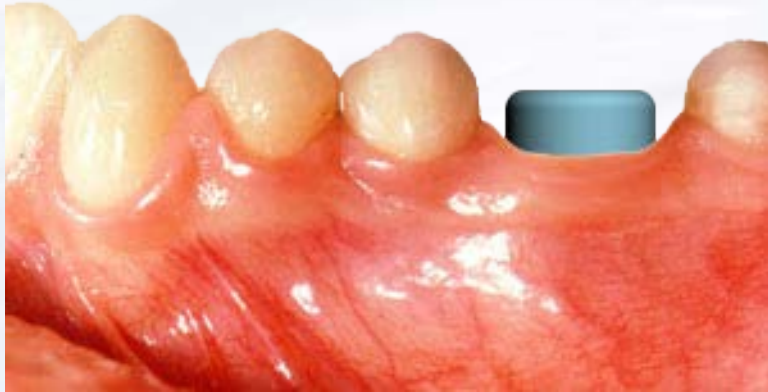
	Size	Part #
	.050 Hex Driver Short	SDS050
	.050 Hex Driver Long	SDL050
	Torque/Ratchet Wrench	TR-900-01
	Thumb Knob for Drivers	TK

Prosthetic instruments needed



**Blue Sky Bio**

# Conus UCLA Screw Retained Crown



Choose matching abutment

## 3.5/4.0 Platform Abutment



Size	Part #
Abutment Double Hex 3.5/4.0mm Straight	UCLADH35

## 4.5/5.0 Platform Abutment



Size	Part #
Abutment Double Hex 4.5/5.0mm Straight	UCLADH50

Healing abutment in place

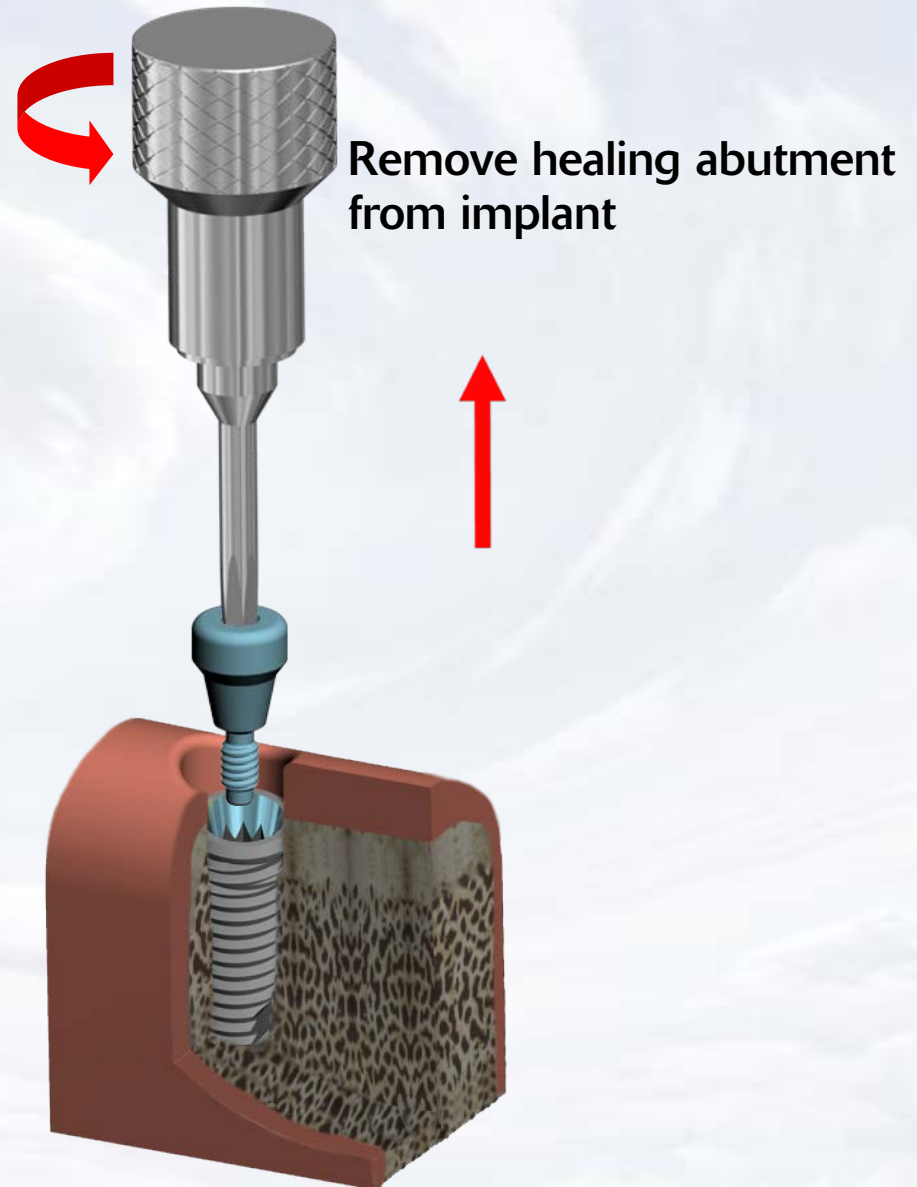
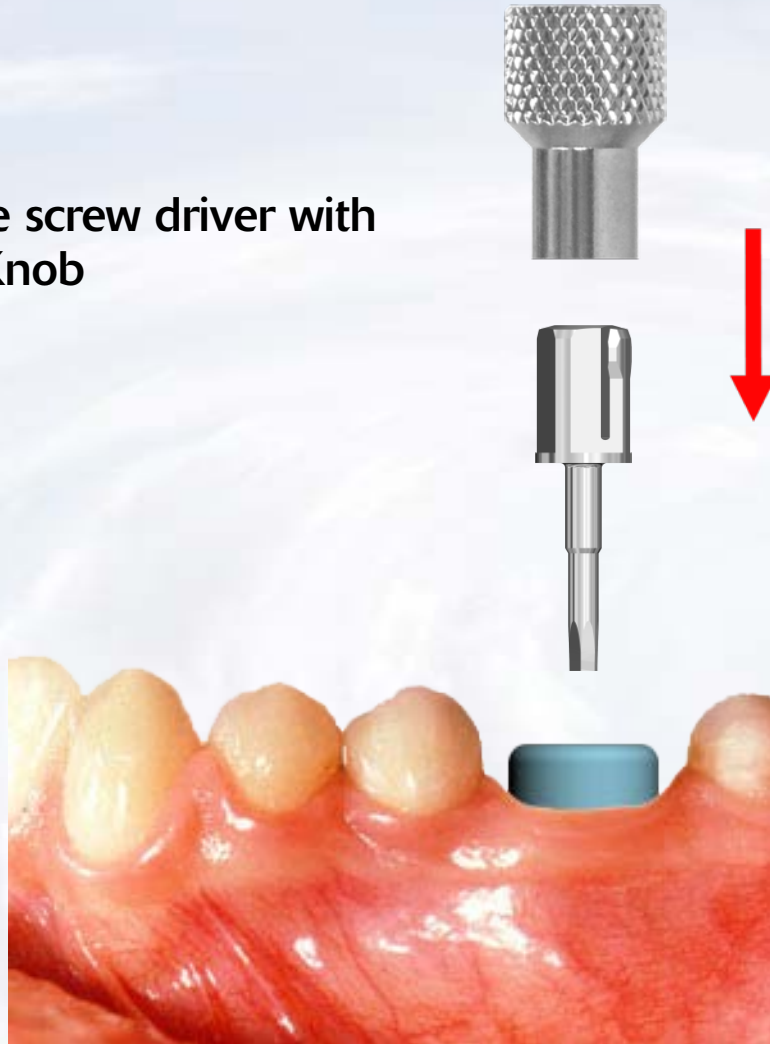
The presentation that follows lists only one combination of parts  
Obviously the clinical situation may call for substitution of another part on this slide



Blue Sky Bio

# Conus UCLA Screw Retained Crown

Assemble screw driver with  
Thumb Knob

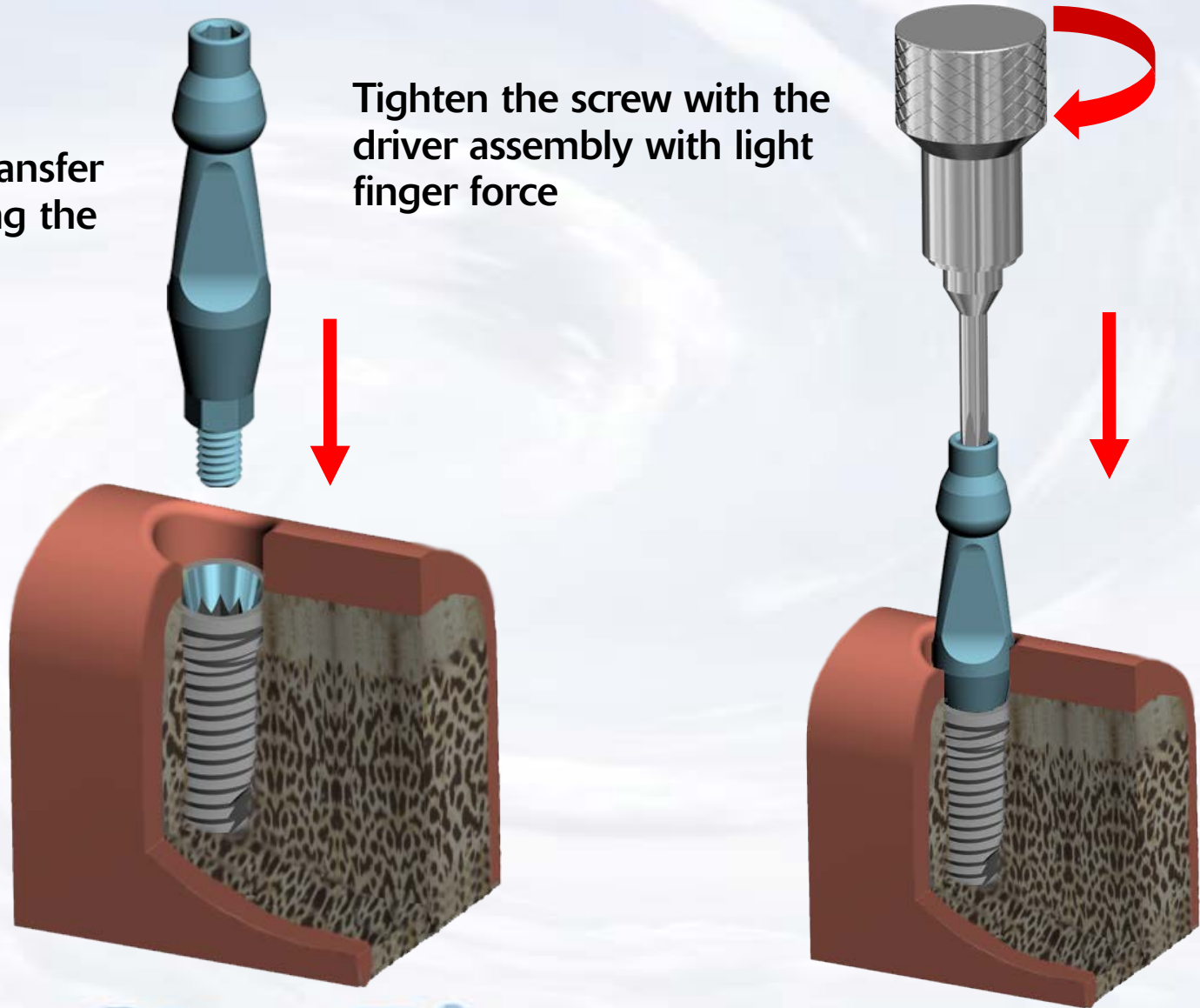


Blue Sky Bio

# Conus UCLA Screw Retained Crown

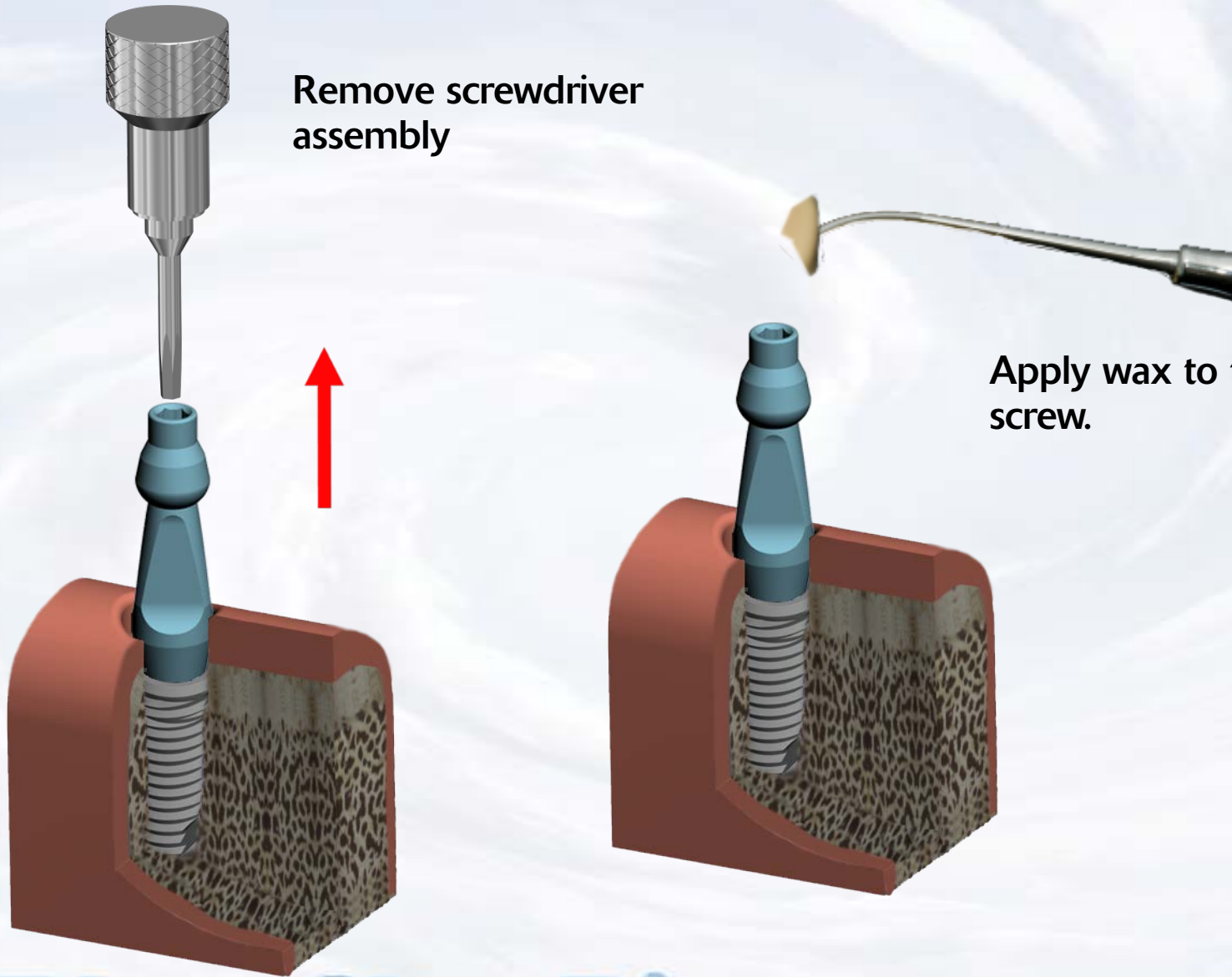
Insert the Impression Transfer into the implant ensuring the appropriate orientation

Tighten the screw with the driver assembly with light finger force



Blue Sky Bio

# Conus UCLA Screw Retained Crown



Remove screwdriver assembly

Apply wax to the top of the screw.



Blue Sky Bio

# Conus UCLA Screw Retained Crown

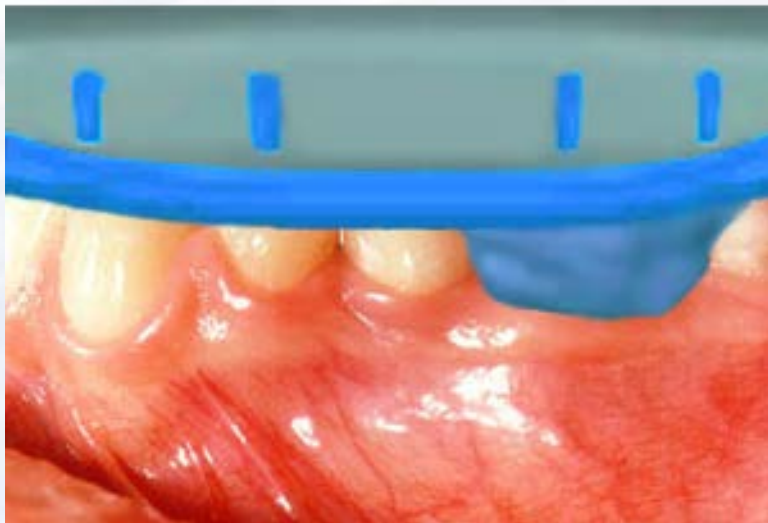


Inject impression material around the impression transfer

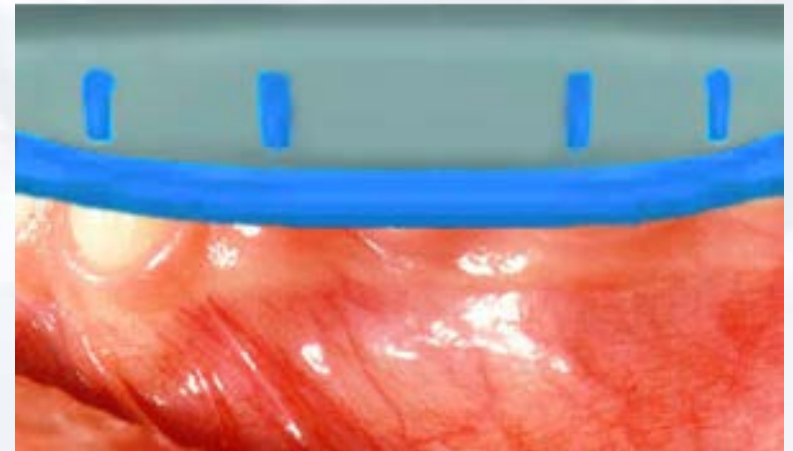


**Blue Sky Bio**

# Conus UCLA Screw Retained Crown



Insert tray with impression material



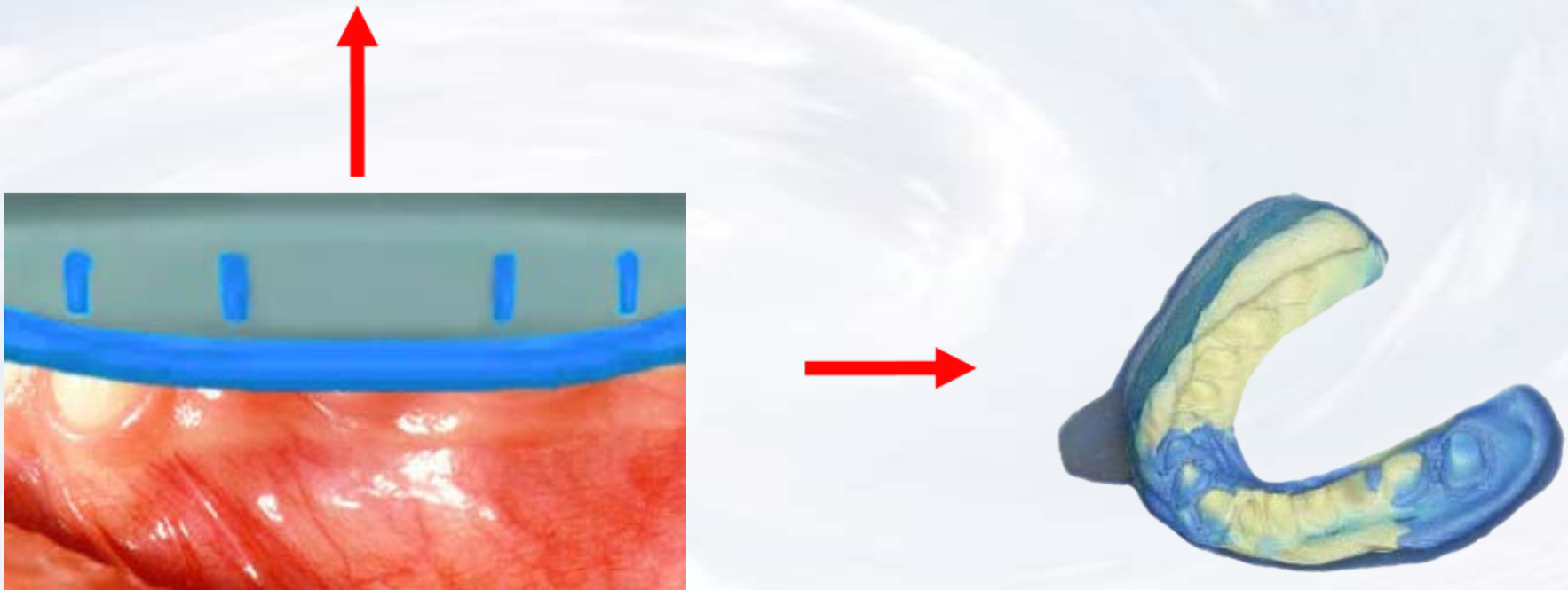
Seat impression to capture dental arch



**Blue Sky Bio**



# Conus UCLA Screw Retained Crown



Remove the impression from the mouth when material has set

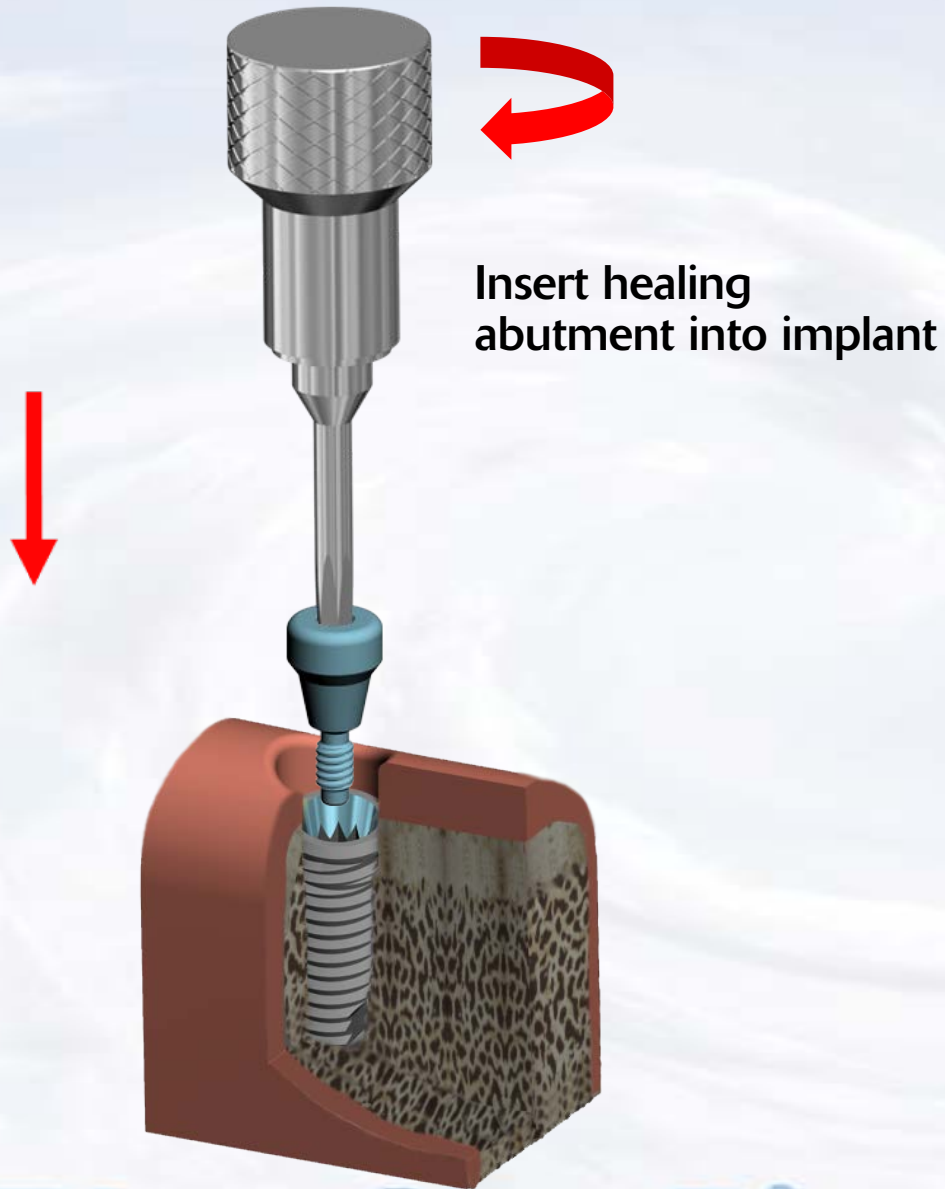


**Blue Sky Bio**

# Conus UCLA Screw Retained Crown

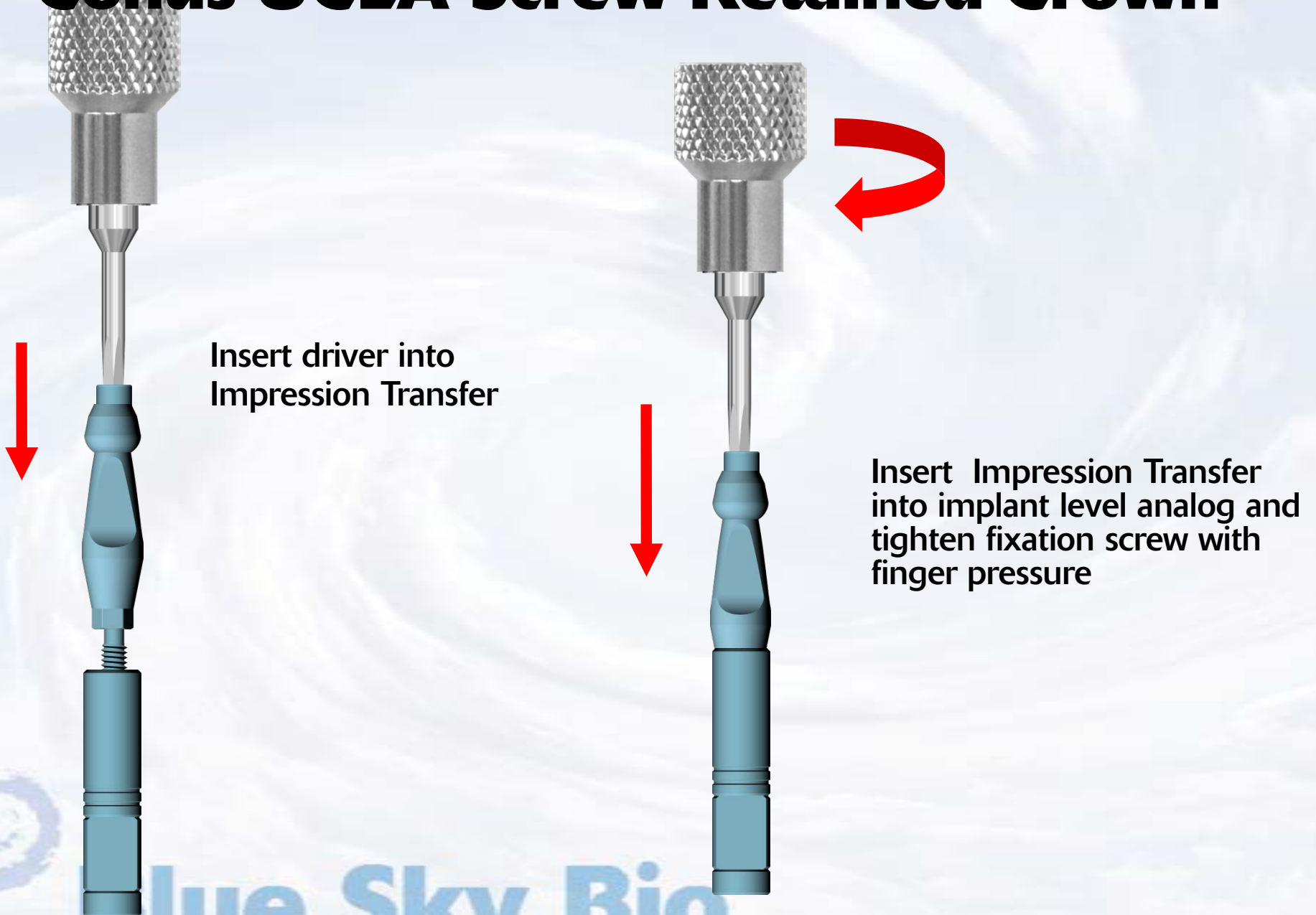


# Conus UCLA Screw Retained Crown



Blue Sky Bio

# Conus UCLA Screw Retained Crown



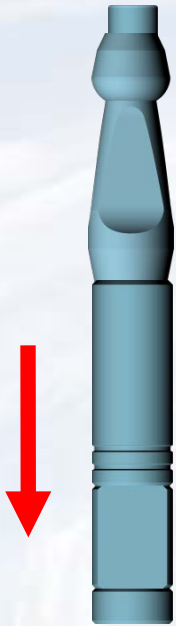
Insert driver into  
Impression Transfer

Insert Impression Transfer  
into implant level analog and  
tighten fixation screw with  
finger pressure

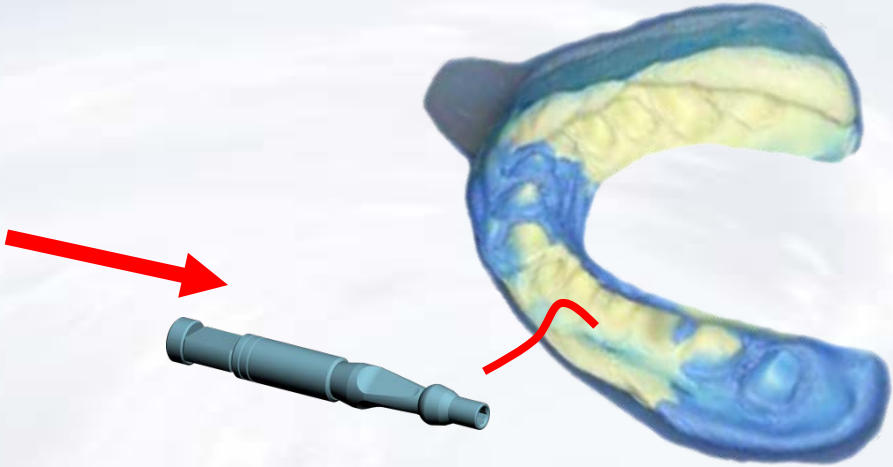


Blue Sky Bio

# Conus UCLA Screw Retained Crown



Assembled UCLA Abutment with implant level analog



Insert transfer/analog assembly into impression

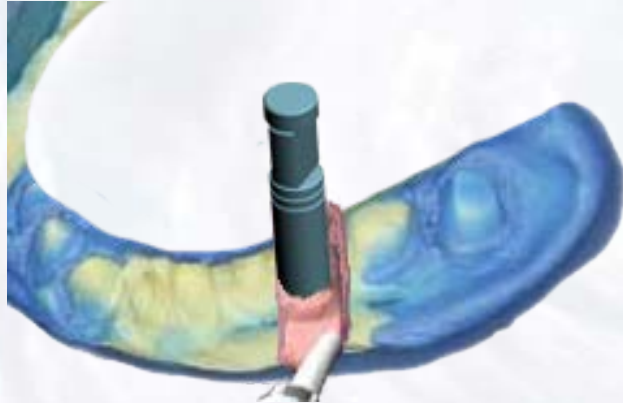


UCLA Abutment/Analog assembly inside impression



# Conus UCLA Screw Retained Crown

Apply soft tissue replica material  
around implant level analog



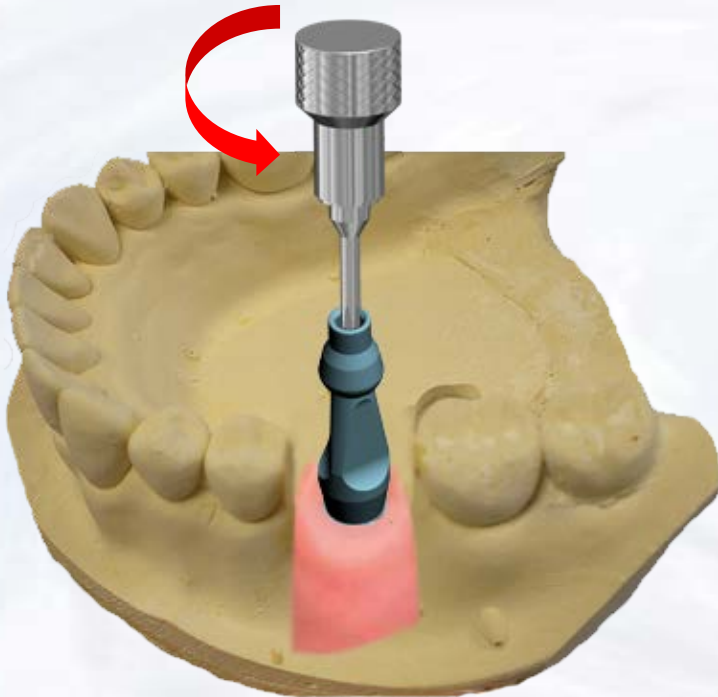
Pour dental stone into impression



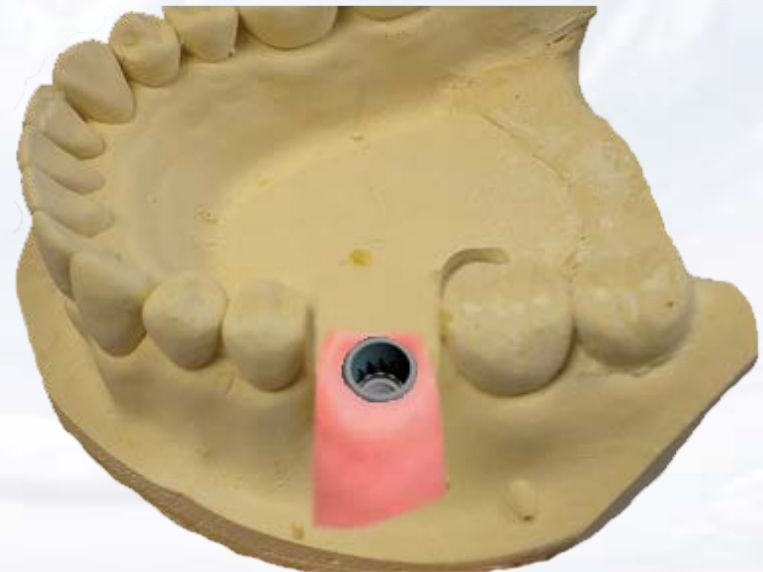
**Blue Sky Bio**

# Conus UCLA Screw Retained Crown

Remove model from impression and loosen the fixation screw of the impression transfer by turning screw driver counter clockwise



Remove impression transfer from analog

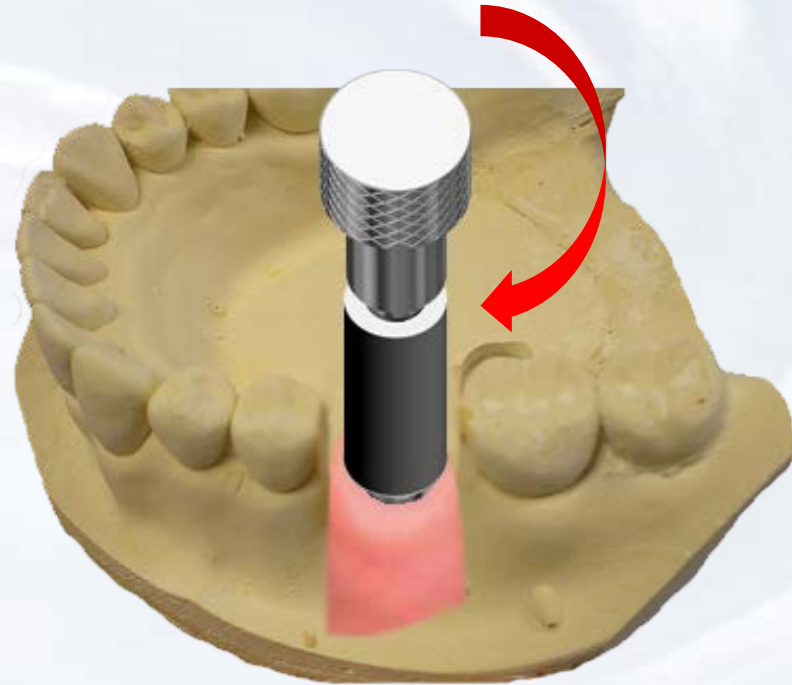
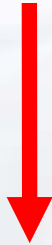


Blue Sky Bio

# Conus UCLA Screw Retained Crown



Insert screw driver assembly into fixation screw in the UCLA abutment



Insert the UCLA abutment into the implant level analog ensuring the appropriate orientation. Hand tighten the fixation screw within the UCLA abutment



Blue Sky Bio

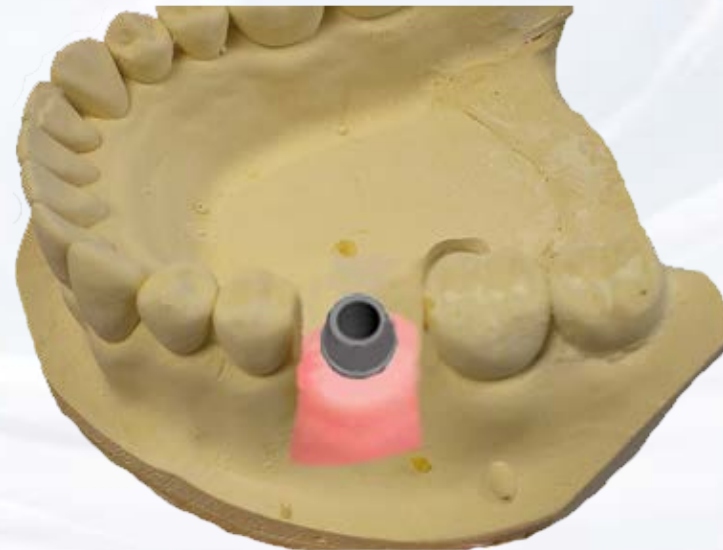


# Conus UCLA Screw Retained Crown

Create a wax up of the desired shape of the abutment by subtracting or adding to the resin of the UCLA abutment



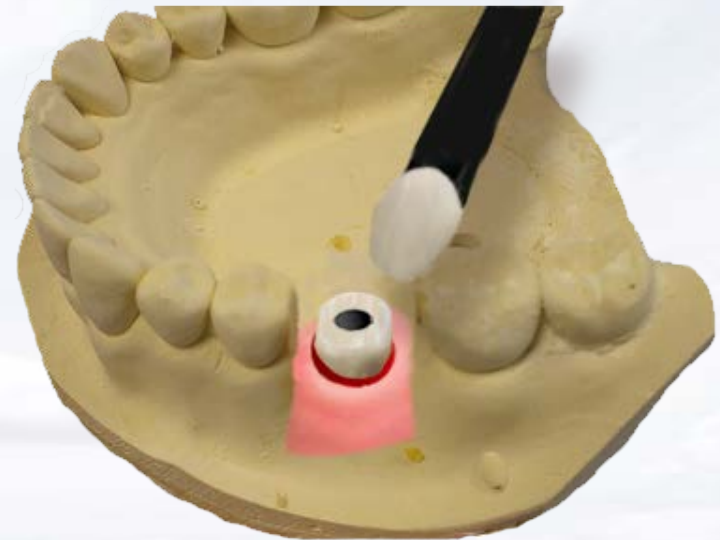
Cast and finish custom UCLA abutment



Blue Sky Bio

# Conus UCLA Screw Retained Crown

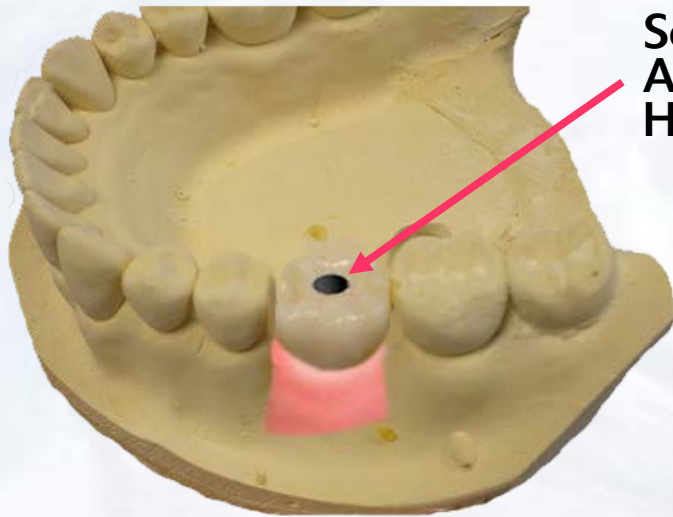
Seal the screw opening of the  
UCLA Abutment



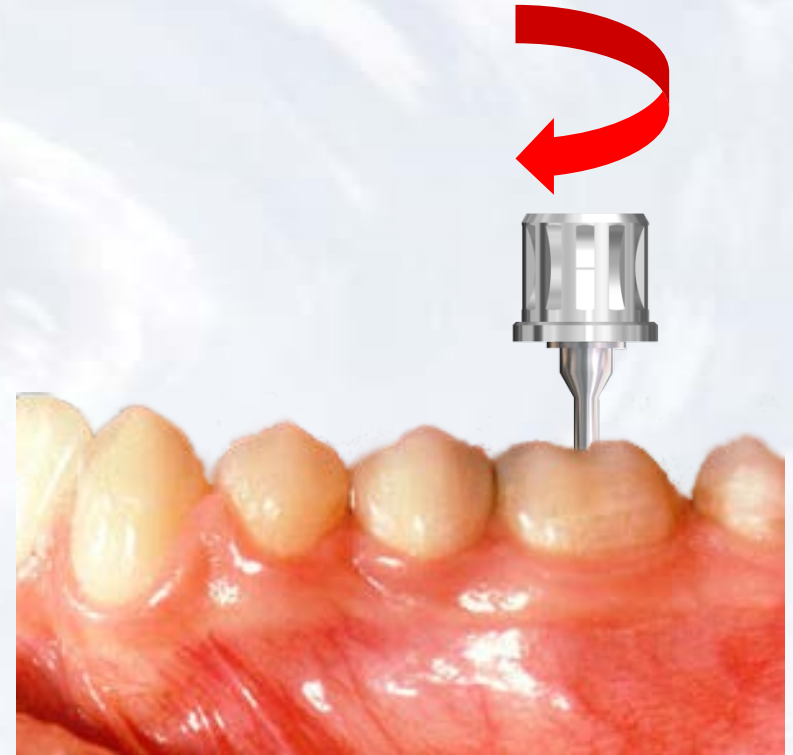
**Blue Sky Bio**

# Conus UCLA Screw Retained Crown

Stack and fire the Ceramic in the usual manner



Screw Access Hole



Use the screw driver assembly to insert the crown

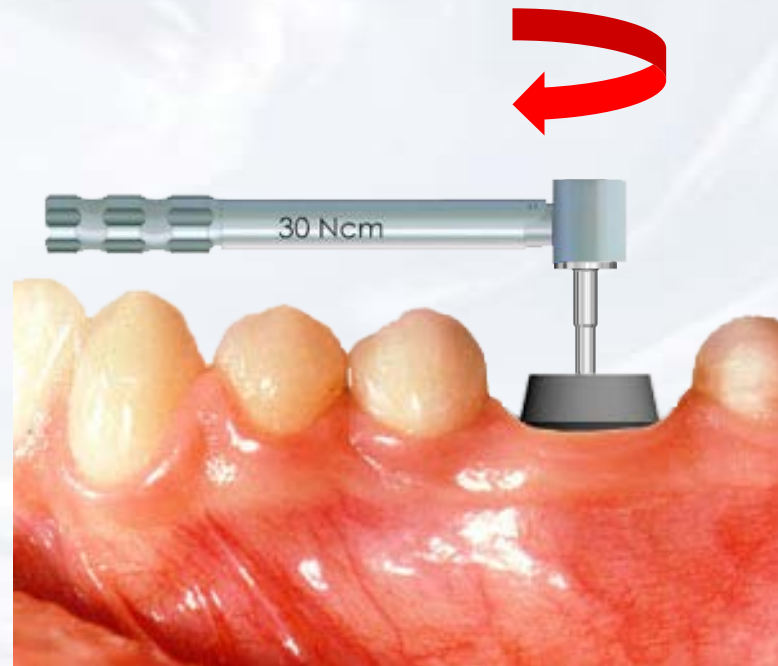


Blue Sky Bio

# Conus UCLA Screw Retained Crown

Insert the hex driver into the 30Ncm torque ratchet

Insert driver into the abutment screw and turn torque ratchet clockwise until torque of 30 Ncm is reached and the head of the ratchet releases



Blue Sky Bio